



**IIS Analysis & Implementation Ltd.**  
**RC 797529**

**Company Profile**

# COMPANY INTRODUCTION



IIS Analysis & Implementation Ltd was incorporated on the 26th January, 2009 as a private limited liability company. We specialize in information technology enterprise architecture solutions, business support services and consulting

We provide solutions for organizations to manage their business strategy, processes, information, people, services, application and technology architecture. Our broad range of services offer detailed technical and professional services for Small Office Home Office (SOHO), small and medium enterprises (SMEs), large enterprises, government department etc.

We offer our service with a global partnership with leading industry giant around the world. And we provide range of services aimed at identifying the best solutions for our clients, and ensuring these solutions match exactly the goals, aspiration and budget of the organization.



## WHAT WE DO

### IT Enterprise Architecture

- Computer and Data Management
- Inverter, Solar, CCTV and Access Control
- Website, blog design & e-Commerce
- Retails Solutions
- Software Solutions (Local Content)

### Customer Service Solutions

- 3rd Party Customer Service Solutions
- Help Desk, Front Desk & Call Centre setup and management
- Executive and Customized training

### Management Consulting

- Corporate Branding and Repositioning
- Digital Marketing
- Strategic and Operational Planning
- Outsourcing and Human Capital Management



**CORPORATE OFFICE:**  
Suite 17&18D, Jeho Shamma Plaza Abiodun Jagun Street, Ogba Lagos  
Tel: 0803 922 2930; 0815 381 6381  
Email: [info@iislimited.com](mailto:info@iislimited.com) | Website: [www.iislimited.com](http://www.iislimited.com)



# Vision and Mission Statement

## **Vision Statement:**

To be the leader in business services delivery and strategic management, using information technology as tool to inspire and implement business solutions

## **Mission Statement:**

We want to create the best customer experience across all businesses and industries in Nigeria, reduce cost through continuous, effective improvement and utilization of technology in terms of process and systems integration.

# Core Value:



Our value (F.A.I.R.) is our advantage. We deliver our services with respect to law and giving 100% satisfaction to the customers. *“We are committed to excellence in everything we do; we are passionate about achieving result that exceeds customer expectations”*.

<b>1. Flexibility</b>	<b>Scalable. We provide cost effective options for different customer's requirement</b>
<b>2. Accountability</b>	We accept responsibility and held ourselves accountable for our services.
<b>3. Integrity</b>	We are honest and dependable. We operate with integrity and quality without any compromise. We do what we say we will do.
<b>4. Reliability</b>	100% QoS (Quality of Service) is our primary concern. Our services are reliable and we stand by it.



# OUR SERVICES - IT Enterprise Architecture



We provide IT services to companies, and proactively managing and supporting their computing environment on an ongoing, set-fee basis

- ▶ Cloud computing
- ▶ Data, Networking and Software Management
- ▶ Hardware and infrastructure solutions
- ▶ Website, blog design & e-Commerce retails solutions
- ▶ IT Supplies and logistics
- ▶ Energy and Power Audit
- ▶ Inverter and Solar
- ▶ CCTV Cameras
- ▶ Fire Alarm Systems





## OUR SERVICES - Customer Experience

Our customer experience solution covers

- ▶ 3rd Party customer service solutions
- ▶ Setting up of helpdesk, front desk and service desk
- ▶ Mystery Shopping Services
- ▶ Service Excellence Gap Assessment
- ▶ Service Level Agreement (SLA) Handling
- ▶ Executive and customized training
- ▶ Private customer service helpdesk (Consumer Standard)





# OUR SERVICES - Management Consulting

## STRATEGY

- IIS Management consulting offers
- ▶ Corporate branding and repositioning
  - ▶ Business Need Analysis
  - ▶ Strategic and operational planning
  - ▶ Project management
  - ▶ Environmental impact assessment (Report)
  - ▶ Office administration
  - ▶ Outsourcing and human capital management

WHERE DO YOUR BUSINESS & IT STRATEGY

## FALL SHORT?







## OUR PARTNERSHIP

We partner with groups of local and international organizations in order to provide the best customer experience for our clients. We have been able to build an amazing team of expertise that has waxed together in experience and professionalism. Partnership has allowed us to increase the reach and the impact of our services,

Together with our partners, we're delivering an entirely new class of business intelligence.

We also partner with top brand solution providers in Nigeria and beyond to provide services on Facility management

- ▶ Energy and Power Audit
- ▶ Inverter and Solar Solutions
- ▶ CCTV and Access Control
- ▶ Fire Safety solutions





# Projects

- ▶ Bella Benson Global Resources Limited
- ▶ Windelectric Nigeria
- ▶ Crest-Aitee Automobile Limited - IT Support Services
- ▶ Translog Logistic Limited - IT Support Services
- ▶ Sodeinde & Associates - Design of Service Level Agreement and Website design
- ▶ Model Homes Projects - Management Consulting, staff training and Website design
- ▶ Mislab Construction Services Limited - Corporate rebranding and digital marketing
- ▶ Jedidiah Sweetha Book - Client service support, graphic designs and IT services
- ▶ Federal Road Safety Corps (FRSC), Headquarter, Abuja. - (Project Consultant) Deployment of Inventory and Stock Control Management Solution (Hardware and software)





# Projects

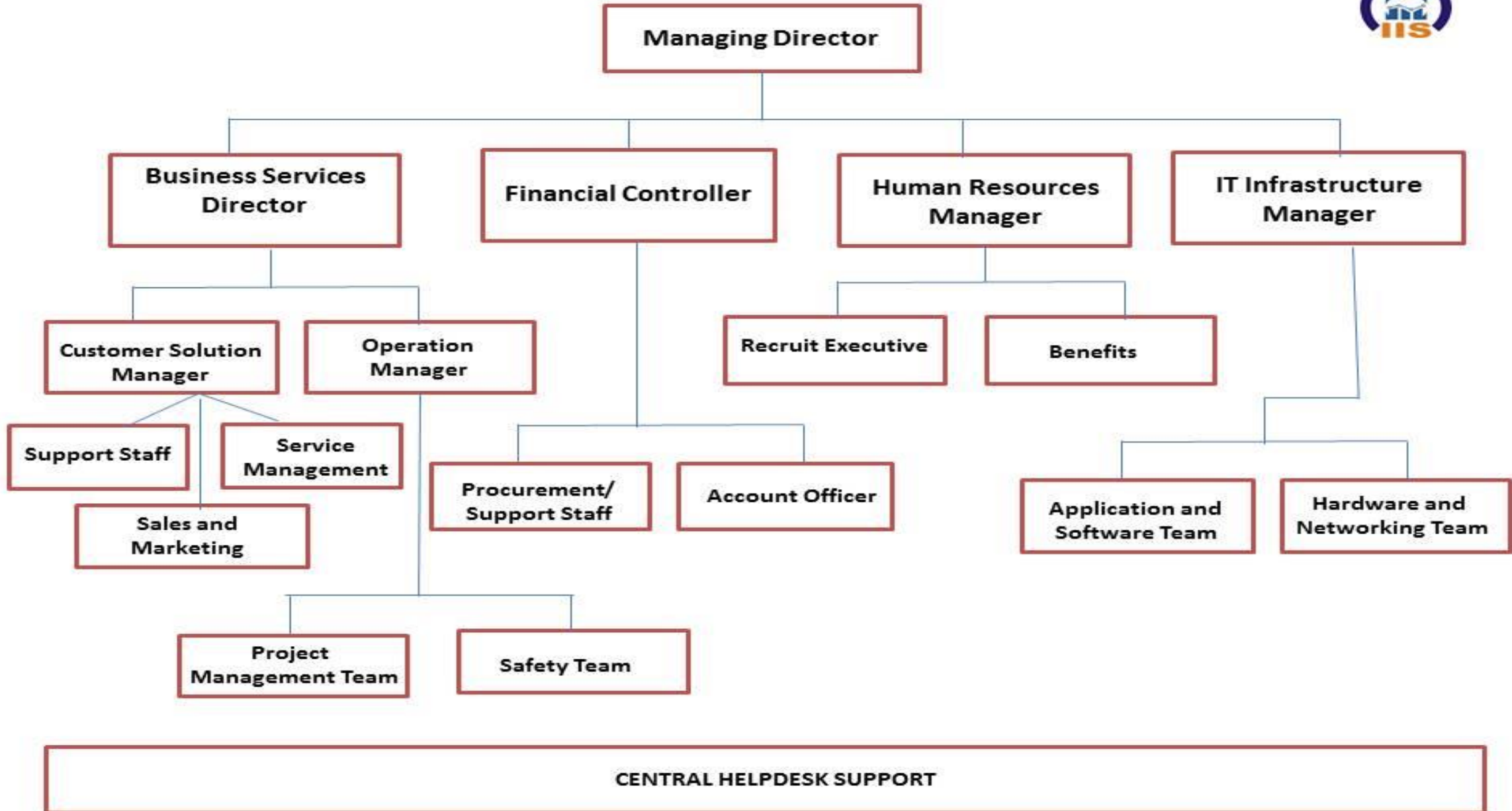
- ▶ Lagos State University, Epe Campus - (Project Consultant) VSAT Installation
- ▶ Lagos State University (NITDA Project) - (Project Consultant) Deployment and Installation of Radio Mast and Wi-Fi equipment for hotspot
- ▶ Enugu State University (NITDA Project) - (Project Consultant) Installation of Radio Mast and Wi-Fi equipment for hotspot
- ▶ Deployment of eLibrary Solution - CUMAC Christian library and resource center, Ibadan
- ▶ Bambamint Venture, Bashorun Ibadan - Client Computers and Server Deployment
- ▶ Triumph Concept, Ibadan - Wireless Internet Solution



Our Projects



# ORGANIZATIONAL STRUCTURE







# KEY PERSONNEL

IIS Analysis & Implementation Ltd is managed by a team of tested professional with huge experience in their chosen field. Currently the company boasts of an able management/technical crew headed by the following;

▶ **Olusegun Ige (MCP) - Managing Director (Customer Experience Expert)**

Olusegun Ige, a customer service and experience expert, holds a degree in Electronics and Computer Engineering from Lagos State University, certificates in ITIL, customer service, Business conduct and ethics, Operational excellence and Information Risk Management. He has over ten years of diversified working experience spanning across IT management, administration and customer service, particularly in the IT technical services, Oil and Gas, Hospitality and telecoms.

▶ **Jide Olukotun - Business Services Director**

Jide Olukotun is a seasoned IT professional. He had his first degree at Lagos state University as a graduate of Electronic and Computer Engineering. Jide further acquired his MSc Degree in Electronic and Electrical Engineering at University of Glasgow, UK. He is a member of the Institute of Engineering and Technology (IET) and a Certified Oracle, Cisco and Microsoft Professional, he has worked in various establishments both in Nigeria and abroad among which include Broadband Technical Support, BECOGENT, Glasgow, UK; PC World, Glasgow, UK; Software Technology Park ltd, APTECH Worldwide, Nigeria. His contributions both in time and ability in ensuring success of the company are invaluable.



# KEY PERSONNEL

## ▶ Nwose William - Manager, Operations

Nwose William is a renewable energy expert. He had his first degree at University of Ibadan as a graduate of Physics and MSc degree from same school. He has over 15 years of experience in oil and gas industry as service delivery and change management specialist.

## ▶ Kehinde Arowolo - Project Manager

Kehinde Arowolo is a certified project manager. She attended Lagos State University, where she obtained a Bachelor of Science Degree in Electronics and Computer Engineering. She has been privileged to work in oil and gas industry for more than five years. She was part of the successful project team that deploy computer system upgrade across all Chevron Nigeria Limited location in Nigeria, her intelligence and experience has been a very strong pivotal for the success of IIS Analysis



# KEY PERSONNEL

## ▶ Taofik Olalekan Jimoh - Financial Controller

Taofik is a graduate of accounting from Ogun State Polytechnic, now Moshood Abiola Polytechnic. He provides strategic financial management and leadership across the business, including ensuring that robust financial controls and processes are deployed consistently.

## ▶ Bimbola Hassan - Manager, Customer Experience Solutions

Bimbola is a graduate of computer science from Ogun State University. He is an ITIL certified and customer experience expert. His expertise in customer service strategy and development is the pride of the organization.

## ▶ Yomi Onileowo - Manager, IT Infrastructure

Yomi Onileowo is a graduate of Electronic and Computer Engineering from Lagos State University. He is a Microsoft Certified Professional with a solid background in server deployment and administration. He is a member of many professional bodies. He has worked with many leading firms, both locally and internationally, during which he attended many courses in ICT and Project Management.



# Corporate Head Office

Suite 17 & 18 D, Jeho Shammah Plaza,  
Abiodun Jagun Street Ogba, Lagos State - Nigeria

Email: [info@iislimited.com](mailto:info@iislimited.com) - W: [www.iislimited.com](http://www.iislimited.com)

Tel: +234 (0)7081249797, (0)8039222930, (0)9095615157

